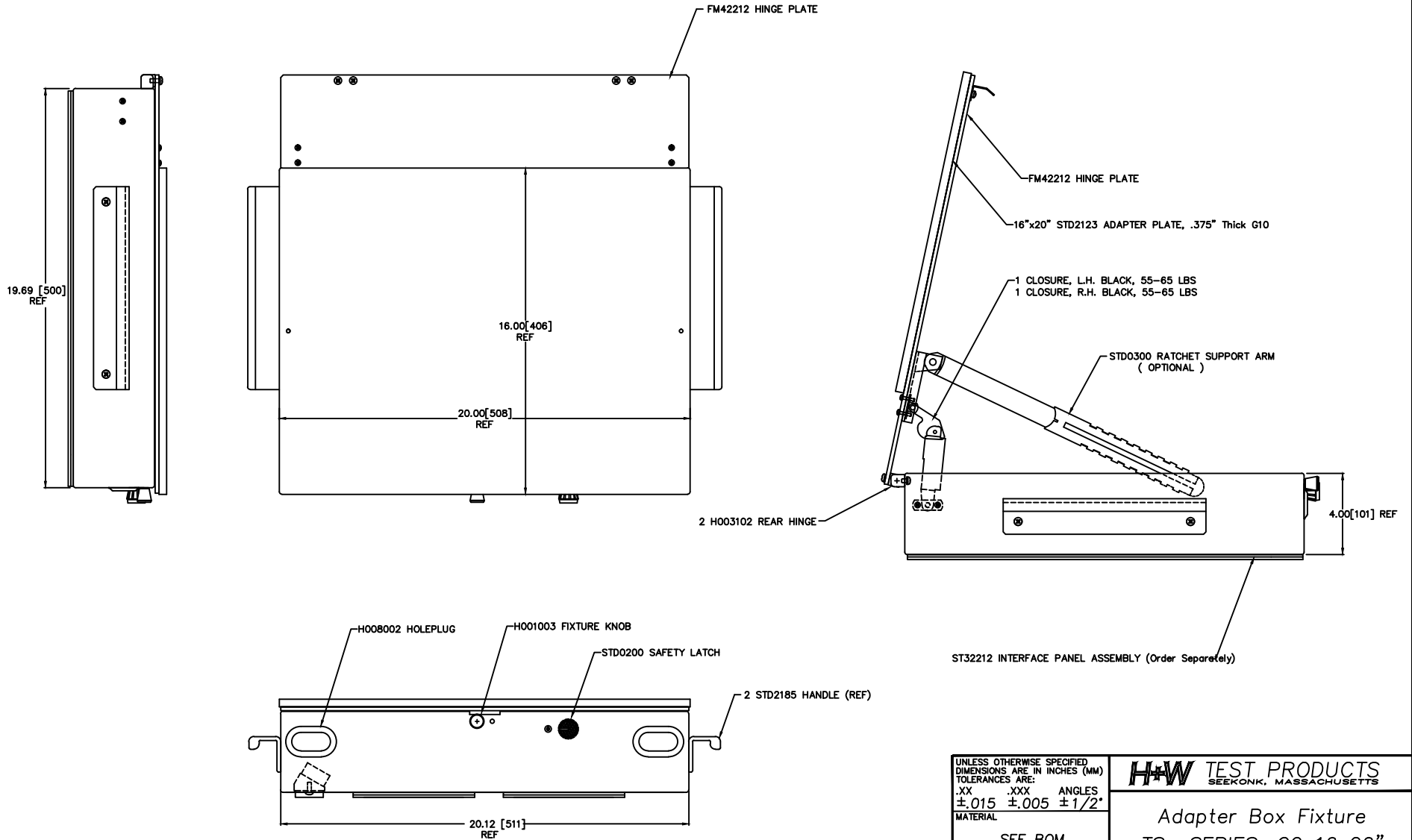


| REVISIONS |                       |            |          |
|-----------|-----------------------|------------|----------|
| LTR       | DESCRIPTION           | DATE       | APPROVED |
| A         | RELEASE TO PRODUCTION | 09/25/2013 | JRA      |



FILE NO.  
FT32003A

PROPRIETARY INFORMATION  
NO COPYING, NOR DISTRIBUTION, NOR USE OF TO  
REPRODUCE OR MANUFACTURE PARTS, WITHOUT  
WRITTEN PERMISSION OF H&W TEST PRODUCTS

|  |           |  |                                   |
|--|-----------|--|-----------------------------------|
| UNLESS OTHERWISE SPECIFIED<br>DIMENSIONS ARE IN INCHES (MM)<br>TOLERANCES ARE:<br>.XX .XXX ANGLES<br>±.015 ±.005 ±1/2° |           | <b>H&amp;W TEST PRODUCTS</b><br>SEEKONK, MASSACHUSETTS |                                   |
| MATERIAL<br>SEE BOM  |           | Adapter Box Fixture<br>TSo SERIES, G2 16x20"           |                                   |
| FINISH<br>NONE   | SIZE<br>E | FSCM NO.<br>DRAWING NO.<br>FT32003                     | REV.<br>A                         |
| DO NOT SCALE DRAWING   |           | SCALE FULL   | DRAWN JRA 09/25/2013 SHEET 1 OF 1 |