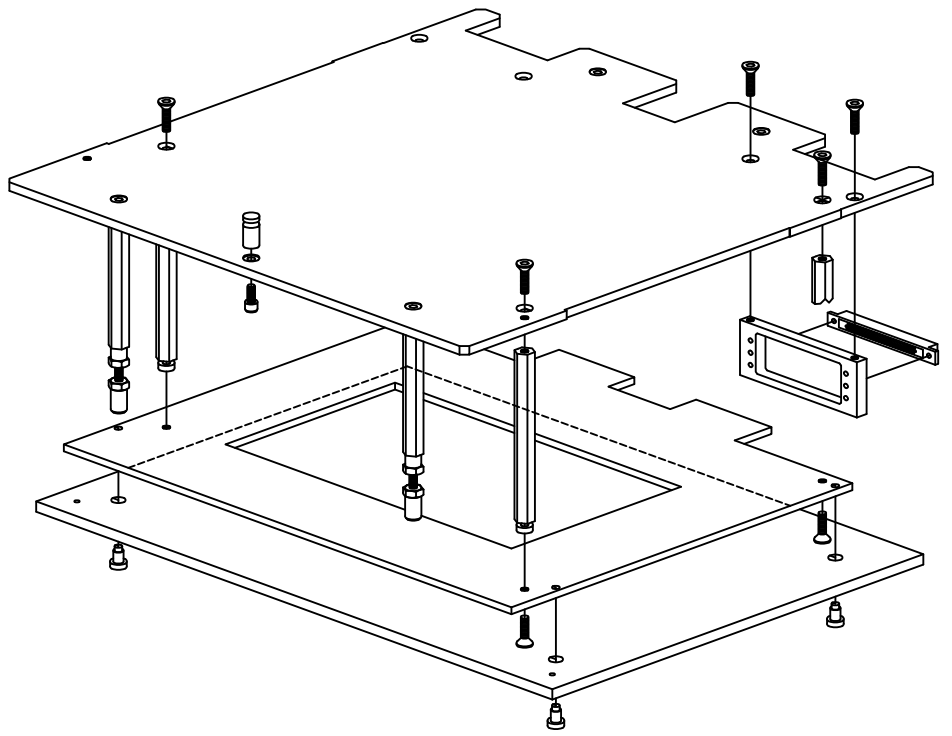
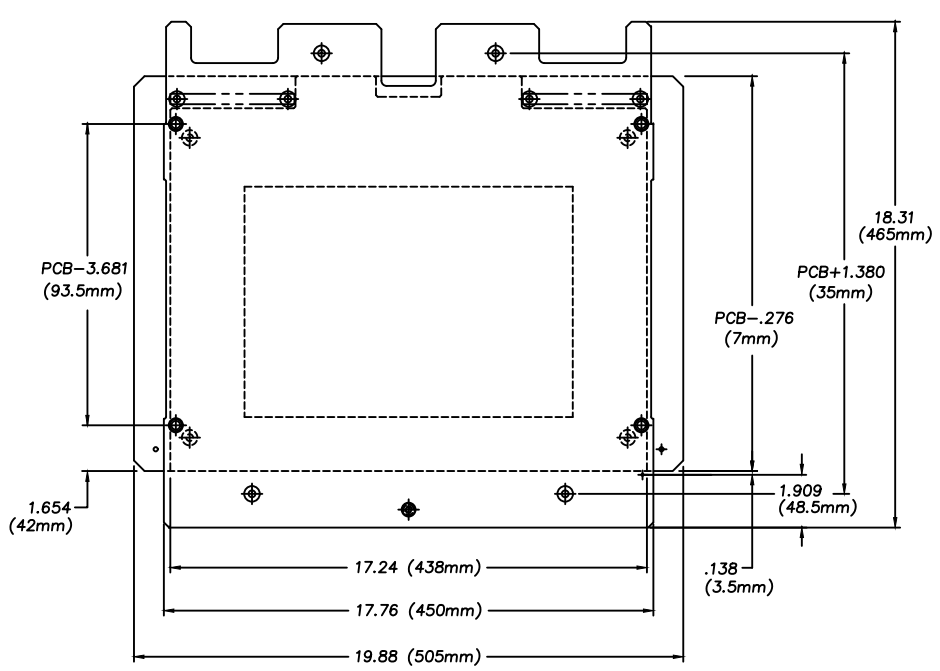


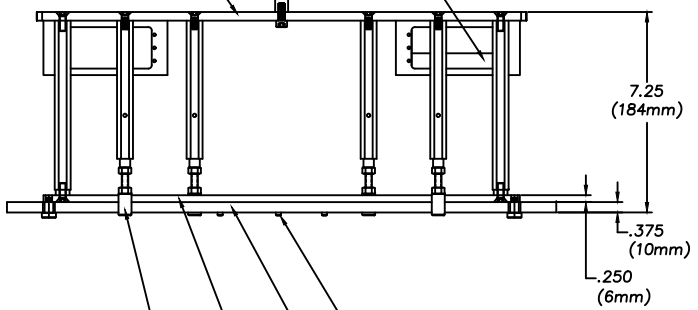
REVISIONS			
LTR	DESCRIPTION	DATE	APPROVED
A	RELEASE TO PRODUCTION	4/2/97	JAG
B	ADDED PARTS, SEE BOM	11/18/97	JAG



H191151 64 PT. CONNECTOR
2 HM14210 SCR, HEX SOC HD CAP
M2.5x10 LG.

PZ12114 LOCK POST
HM14614 SCR, HEX SOC HD CAP
M6x14 LG.

PZ12110 JIG PLATE



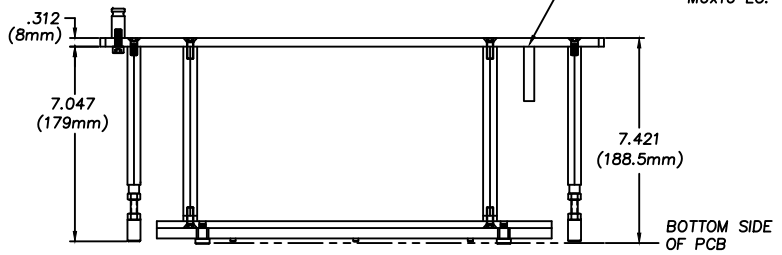
20 PZ12415 PRESS ON, SHORT

PZ12111 UPPER PROBE PLATE

PZ12112 PRESS ON PLATE

4 PZ12402 HOLD DOWN ASSEMBLY
SPRING LOADED

2 PZ12116 CONNECTOR JIG
4 HM13616 SCR, HEX SOC FLAT HD
M6x16 LG.



BOTTOM SIDE
OF PCB

THIS DRAWING IS FOR ASSEMBLY REFERENCE ONLY

UNLESS OTHERWISE SPECIFIED
DIMENSIONS ARE IN INCHES (MM)
TOLERANCES ARE:
.XX .XXX ANGLES
±.015 ±.005 ±1/2°

H&W TEST PRODUCTS
SEEKONK, MASSACHUSETTS

MATERIAL
SEE BILLS OF
MATERIALS

UPPER HEAD-ASSEMBLY
PHILIPS AUTOHANDLER

FINISH
NONE

SIZE	FSCM NO.	DRAWING NO.	REV.
E		PZ12102	B

PROPRIETARY INFORMATION
NO COPYING, NOR DISTRIBUTION, NOR USE OF TO
REPRODUCE OR MANUFACTURE PARTS, WITHOUT
WRITTEN PERMISSION OF H&W TEST PRODUCTS

PZ12102	PZ12102
NEXT ASSY	USED ON
APPLICATION	

DO NOT SCALE DRAWING

SCALE FULL DRAWN JAG 05/22/96 SHEET 2 OF 2

FILE NO.
PZ12102B2