

H+W TEST PRODUCTS

58 INDUSTRIAL COURT SEEKONK, MA 02771 www.hwtestproducts.com Tel. 508-336-3200 Fax. 508-336-6855

32 Position Probe Contacts 20 Amp Power

SBR032MP (Receiver Side)SBF032MP (ITA-Fixture Side)

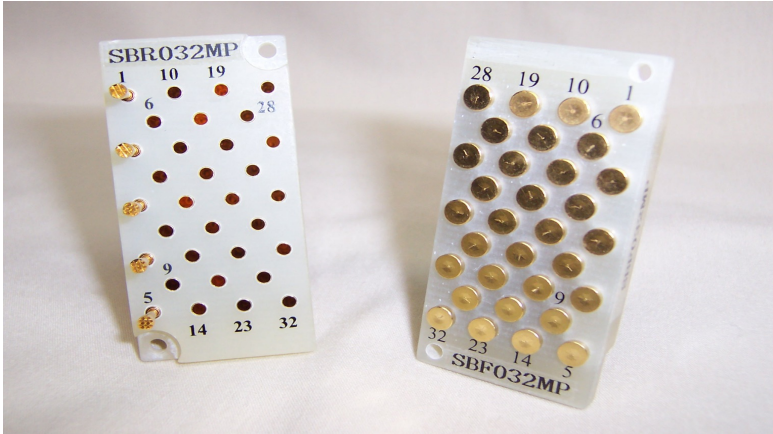


Image shown with partially loaded probe contacts, just for visual reference.

Description: The SBR032MP Receiver Block provides 32 replaceable spring-loaded power probes. Probes are already installed or can be removed (front side) from any position to match the test application. Each probe's maximum current rating is 24 amps and the recommended continuous current rating is 20 amps.

Applications: The probes can be wired in parallel for test applications requiring higher currents or for redundant backup. Redundant probes would divide the load equally between each probe providing several current paths to address conditions that require uninterrupted power should a single point fail. Higher currents greater than 20 amps would be divided equally between each probe (ex. 50 amp load divided by 3 probes = 16.66 amps per probe). Remember to use the same size wire gauge and wire lengths for equal load sharing. The probes have serrated style heads providing multiple contact points per probe. Both the receiver and fixture side will accept wire sizes up to 12 awg and require solder connections.

These Blocks can be modified to be compatible with PYLON/1280pt Receivers (**consult factory**).

Physical Specifications

Block material.....G-10 fine weave interwoven glass in an epoxy matrix
 Block dimensions (inch).....2.345 H x 1.115 W (mm).....59.563 H x 28.321 W
 Block material operating temperature (maximum for typical applications)266 °F / 130 °C

Electrical Specifications

Specifications for mated (receiver with fixture) contact pairs

Number of contacts32
 Voltage rating.....250 Vac
 Current rating (continuous).....20 Amp
 Current rating (maximum).....24 Amp
 Contact Resistance.....<15 mOhms
 Capacitance.....21 pF
 Inductance.....3 nH
 Durability.....100,000 cycles
 Wire Size (both sides).....up to 12 awg

Specifications for the G-10 block material

Dielectric strength per ASTM D 149.....510 Volts/mil
 Dielectric constant (100hz - 10,000mhz).....4.40 to 4.80
 Surface resistivity (ohms/sq. in) @95% relative humidity...
 > 10¹²
 Dissipation factor @ 1mhz per ASTM D150.....0.019
 Permittivity @ 1mhz per ASTM D150.....4.6
 Dielectric breakdown per ASTM D 149 per 1/16" matl.....
 > 40 kv
 Coefficient of linear expansion(in. / °C).....length 1.0 x 10⁻⁵

Receiver Side Ordering Information

Blocks come with (32) contacts installed.

Part Number

Block Assy (includes all hardware).....**SBR032MP**

(ITA)Fixture Side Ordering Information

Blocks come with (32) rivets installed.

Part Number

Block Assy (includes all hardware).....**SBF032MP**